

State of Wyoming Corner Record

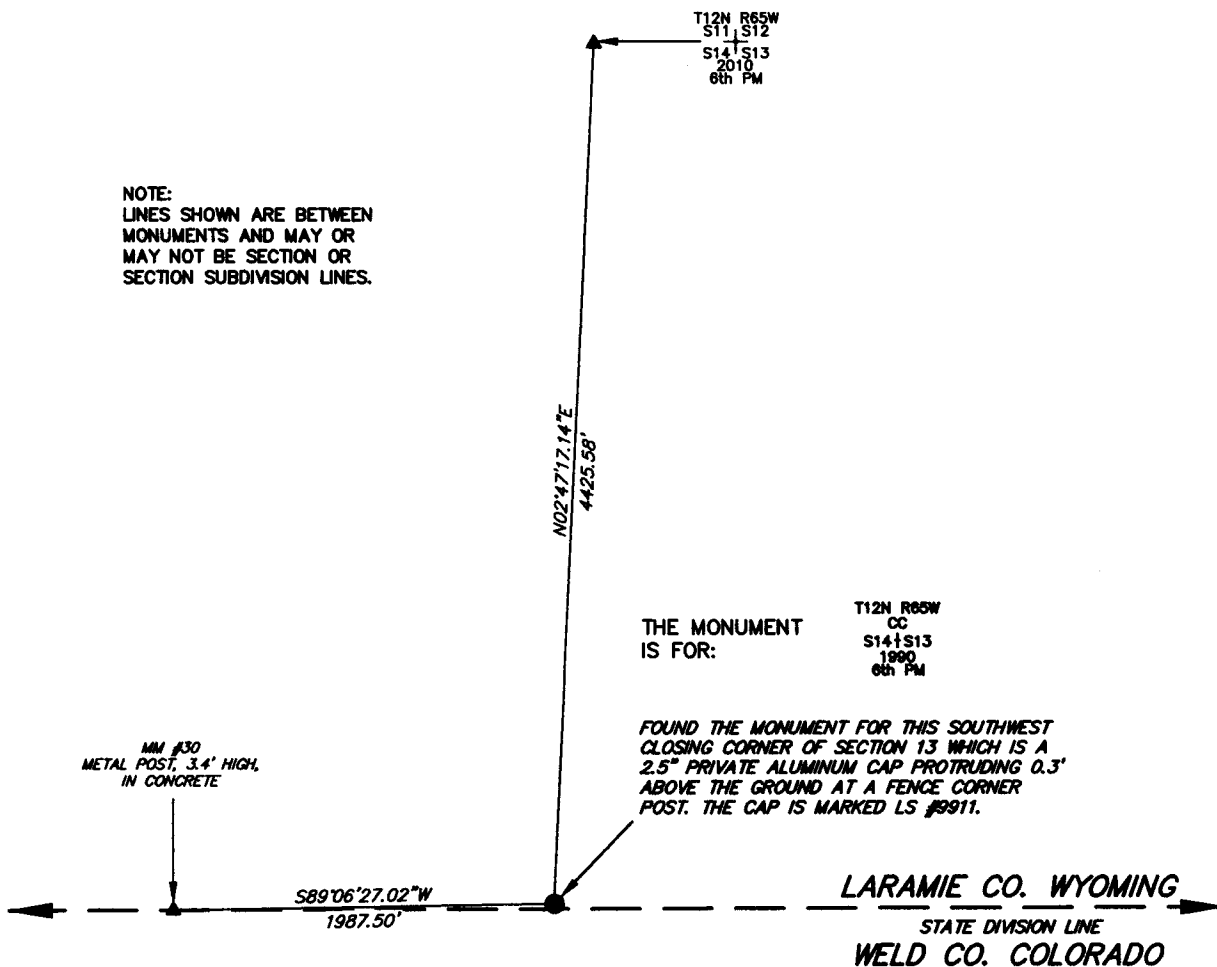
CORNER PERPETUATION AND FILING ACT,

Regulations of the Board of Registration for Professional Engineers and Land Surveyors.)

Reverse side of this form may be used if more space is needed.

Record of original survey and citation of source of historic information (if corner is lost or obliterated). Description of corner monumentation evidence found and/or monument and accessories established to perpetuate the location of this corner. Sketch of relative location of monument, accessories, and reference points with course and distance to adjacent corner(s) (if determined in this survey). Method and rationale for reestablishment of lost or obliterated corner.

NOTE:
LINES SHOWN ARE BETWEEN
MONUMENTS AND MAY OR
MAY NOT BE SECTION OR
SECTION SUBDIVISION LINES.



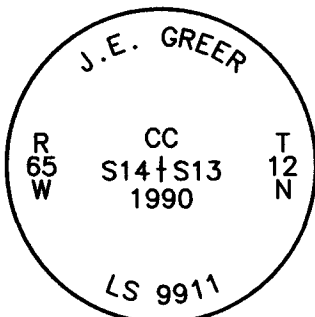
MM #30
METAL POST, 3.4' HIGH,
IN CONCRETE

THE MONUMENT
IS FOR:

T12N R65W
CC
S14+S13
1990
6th PM

FOUND THE MONUMENT FOR THIS SOUTHWEST
CLOSING CORNER OF SECTION 13 WHICH IS A
2.5" PRIVATE ALUMINUM CAP PROTRUDING 0.3'
ABOVE THE GROUND AT A FENCE CORNER
POST. THE CAP IS MARKED LS #9911.

LARAMIE CO. WYOMING
STATE DIVISION LINE
WELD CO. COLORADO



CORNER MONUMENT SYMBOLS

- RECORD IS FOR THIS CORNER MONUMENT.
- ▲ A RELATED CORNER OR WC MONUMENT.

SCALE 1"=1000'
(EXCEPT IN
TRIVIAL CASES)
BEARINGS ARE RELATED
TO WGS 84 WITH
GPS OBSERVATIONS
DRAWN BY: SM
P.C. G. WEIMER
COUNTY: LARAMIE/WEL

THE MONUMENT IS MARKED

Date of Field Work: 09/18/2014 Office Reference: _____

CROSS INDEX DIAGRAM

A	1	2	3	4	5	6	7	8	9	10	11	12	13	14	15	16	17	18	19	20	21	22	23	24	25
B																									
C			6		5			4						3											
D																									
E																									
F																									
G			7		8			9						10											
H																									
J																									
K																									
L			18		17			16						15											
M																									
N																									
O																									
P			19		20			21						22											
Q																									
R																									
S																									
T			30		29			28						27											
U																									
V																									
W																									
X			31		32			33						34											
Y																									
Z	1	2	3	4	5	6	7	8	9	10	11	12	13	14	15	16	17	18	19	20	21	22	23	24	25

Firm/Agency, Address

UELS, LLC

85 South 200 East

Vernal, Utah 84078

Telephone Number: 435-789-1017

This corner record was prepared
by me or under my direction
and supervision.

SEAL & SIGNATURE



RECP #: 670064

RECORDED 9/22/2015 AT 10:39 AM BK# 2465 PG# 72
Debra K. Lathrop, CLERK OF LARAMIE COUNTY, WY PAGE 1 OF 1

Corner Name: SOUTHWEST CORNER ON WY/CO LINE Section: 13 T 12N R 65W ; 6TH P.M. Cross Index No.: M.5-21